

GURU KRUPA  
FOUNDATION

# ANNUAL REPORT 2022



# A WORD FROM THE PRESIDENT

In our fifteenth year of operation, the Guru Krupa Foundation's activities reflect an ongoing commitment to making a holistic impact, and addressing a wide range of issues from education to basic sustenance and spirituality.

Our grantmaking process has evolved organically over the years. While we were initially focused on children in need, we soon expanded support to include the equally vulnerable, elderly and disabled population. Subsequently, recognizing the need to support youth and adults, we began investing in skills training and higher education fellowships. Our long lasting contributions to cultural and spiritual programs honor our heritage, and our recent investments under the Environment category pay tribute to the Earth that sustains us.

Our Social Welfare investments are focused heavily on children and education, under the assumption this gives them the best chance of breaking out of the cycle of intergenerational poverty. Additionally, empowering vulnerable adults through the provision of skills training programs enables them to be self-supporting and live a life with dignity.

Higher Education grants are given to students at prestigious universities, and research projects that advance science, leading to a better quality of life for all. Spirituality, Arts and Culture grants enhance cultural education and knowledge, promote global harmony and preserve timeless philosophies. Environmental grants aim to preserve the planet.

Having forged strong partnerships with 73 exceptional organizations, we are excited for the future as we remain committed to empowering the vulnerable, advancing our historical and scientific knowledge, while preserving our shared world.

I would also like to take this opportunity to express my thanks to our board members, Amit Maitra, Deepak Nayak and Lalit Bahl, who give so generously of their time, and to our dedicated staff, who keep us running.



**MUKUND PADMANABHAN**  
PRESIDENT



# OUR MISSION

**HELP THOSE LESS FORTUNATE**

**ACQUISITION OF KNOWLEDGE**

**PRESERVATION OF HISTORY  
AND KNOWLEDGE**

The Guru Krupa Foundation, driven by the principles of Hinduism, follows a holistic approach to charitable giving, addressing a range of issues from education to basic sustenance, arts & culture, and the environment.

Our principles and philosophy, derived from the value system of Hinduism, may be succinctly summarized as:

- *Help those who are less fortunate than yourself*
- *Support causes related to the acquisition of knowledge (both materialistic and non-materialistic)*
- *Preserve the heritage and knowledge that has already been acquired*



# FOCUS AREAS

## SOCIAL WELFARE

This category addresses the inequalities faced by people who do not have access to the most basic of human rights. The standard of living today varies, by several orders of magnitude, between the most and least fortunate of people, and there are many people for whom even basic material needs are not met. Our goals are to improve the lives of these people and give them the tools to break out of the cycle of poverty they live in.

## HIGHER EDUCATION

This category addresses the human quest to understand the physical world we live in, and the natural laws that govern it. This quest for knowledge is best nurtured in higher study programs of universities and research labs, and our goal is to motivate students to pursue these programs.

## SPIRITUALITY, ARTS & CULTURE

This category addresses the non-materialistic aspects of human life and its power to nourish, inspire and uplift the human spirit. Hindu culture and spiritual viewpoints have evolved over many millennia, and our goal is to remember and preserve these roots, while promoting cultural integration and co-existence with other viewpoints.

## ENVIRONMENTAL

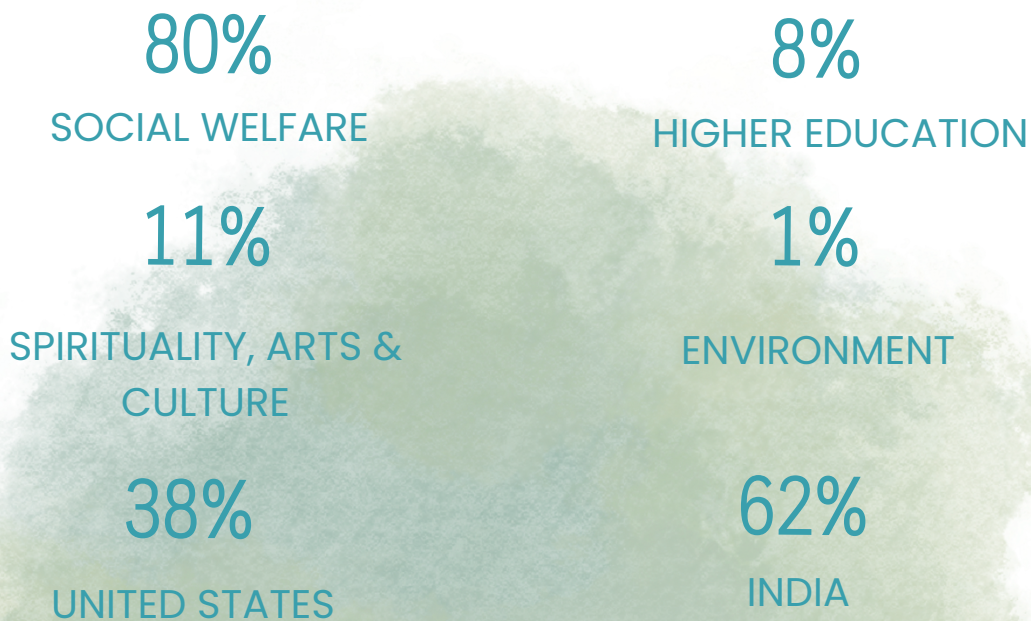
This category addresses the preservation of the environment we live in. The Earth sustains us and provides for us, and we need to preserve and nurture it for our sake and for the sake of future generations. Our goal is to fulfill our responsibility by taking care of the environment we live in.





# OUR NUMBERS

## Number of Grantees By Category



## Funding Amount By Location



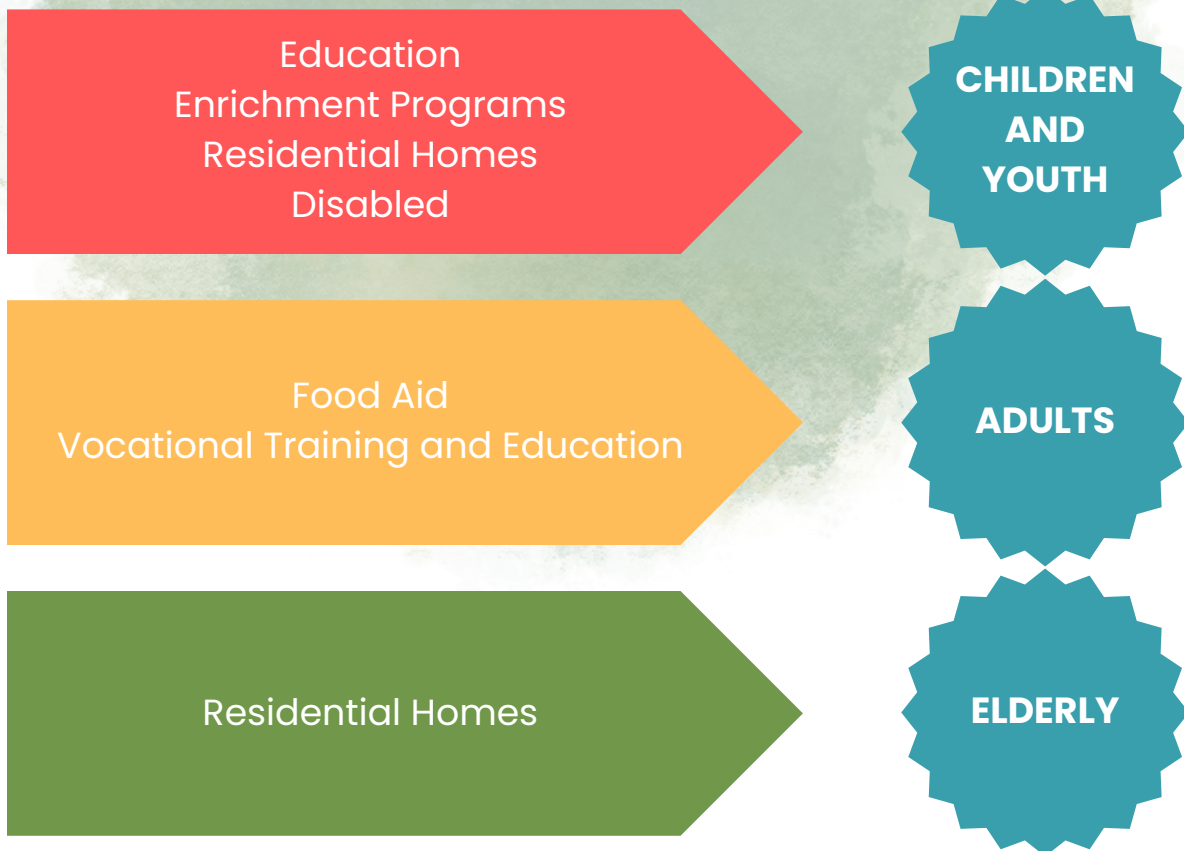
## Impact Snapshot



# SOCIAL WELFARE

## US & India

Guru Krupa Foundation addresses a wide range of social welfare issues from education to basic sustenance to empowerment. We are committed to investing in a diverse portfolio of projects so that we may drive meaningful, long term and sustainable change in the communities we serve. Social Welfare initiatives include supporting underprivileged individuals, empowering women, promoting STEM education, supporting elderly, and environmental conservation programs. Additionally, the Foundation provides support to food banks, poverty alleviation and skills training programs for youth (including those with disabilities). Our holistic investment strategy targeting health and nutrition outcomes, alongside prioritizing the support of education programs, has benefited thousands of children and youth this year alone. Our focus areas include:





# CHILDREN AND YOUTH

## Enrichment Programs



- **Brooklyn Book Bodega**
- **Behind the Book**
- **City Parks Foundation**
- **First Book**
- **Flushing Town Hall**
- **Long island Children's Museum**
- **Literacy Nassau Inc**
- **Reach Out and Read**
- **Read to a Child**
- **Simons Laufer Math Institute**
- **Staten Island Giving Circle**
- **Start Lighthouse**
- **St Nick's Alliance**
- **Youth Leadership Development Program**



# CHILDREN AND YOUTH Education

- American India Foundation
- Aim for Seva USA
- Agastya International Foundation
- Akshaya Patra Foundation USA
- Anandam
- Anisha
- Bala Mandir Trust
- Children International
- Commit 2 Change
- Child Rights and You
- Educatr
- India Literacy Project
- Lotus Outreach International
- Muthuswamy Educational Trust
- Sevalaya
- Sri Ramacharan Charitable Trust
- Sri Ramakrishna Math Vivekananda Centenary Girls Higher Secondary Schools
- Sri Ramakrishna Mission Students Home





# CHILDREN AND YOUTH

## Residential Homes and Disabled

### RESIDENTIAL HOMES

- **Adruta Children Home**
- **AUM Pranava Ashram**
- **Seva Chakkara Samajam**
- **Sri Kanyakumari Gurukula Ashram**
- **Yoga Gives Back**

### DISABLED

- **Amar Seva Sangam**
- **Sri Arunodayam Charitable Trust**
- **Balavidyalaya Schools**
- **Hope Charitable Trust**
- **Help The Blind Foundation**
- **Institute For Helping The Disabled**
- **Madras Dyslexia Association**
- **Vidyasagar**





# ADULTS

## Food Aid and Vocational Training & Education

### FOOD AID

- Reaching Out Community Services
- South Asian Council for Social Services

### VOCATIONAL TRAINING AND EDUCATION

- Action For India
- Association for Non-Traditional Employment For Women
- Desai Foundation
- Grassroots India
- Her Future Coalition
- S M Sehgal Foundation
- Sri Vivekananda Rural Community College
- Women's Organization for Rural Development





# *ELDERLY* Residential Homes



- **American Friends of HelpAge India**
- **Kannathal Foundation**
- **Sri Poorna Mahameru Trust**



# SPIRITUALITY, ARTS & CULTURE

## US & India

Spirituality, arts and culture are a means for an individual to connect with something larger than themselves. These categories nurture a shared identity and also allows individuals to connect with their own roots. Guru Krupa's commitment to this category is focused on growing and preserving these connections. Grantees are focused on preserving Hindu scriptures, cultural customs, and the celebration of Hindu festivals.



- **Hindu American Foundation**
- **Sri Arunachala Ashram**
- **Religion News Foundation**
- **Sanskrita Bharati**
- **Sri Ramanuja Mission of Srirangam Srimath Andavan Ashramam**
- **Sri Ranganatha Temple**
- **Srirangam Srimad Andavan Ashramam**
- **Sri Pratyaksha Charitable Trust**



# HIGHER EDUCATION

## US & India

Higher Education is a priority for the Foundation. By investing in higher education, we aim to inspire future leaders and empower the creation and dissemination of knowledge. Our funding encourages students to pursue higher learning and research, to make meaningful impacts in the fields of engineering, computational neuroscience and medicine. Grantees in this category are students at top-tier universities and research laboratories.



- **Cold Spring Harbor Laboratory**
- **IEEE Solid State Circuits Society**
- **Stony Brook School of Medicine**
- **University of California**
- **Wiki Education Foundation**
- **Indian Institute of Technology**

# ENVIRONMENTAL US & India

Humanity is birthed and sustained by the Earth. Preserving the earth is not just our duty, but also necessary for our survival. Our commitment to the environment is focused on clean water management and the preservation of local fauna & flora.

Grantees in this category run programs that protect land & clean water, biodiversity and address issues related to climate change.



**The Nature  
Conservancy**

